

PAJUNK®

StimuLong Sono-Tsui Set

*The Multifunctional Kit for
Precise Catheter Stimulation*

Plexus and Epidural anaesthesia

StimuLong Sono-Tsui Set

Precise stimulation and localization

With the StimuLong Sono-Tsui Set, Dr. Ban C. Tsui has developed a catheter set in cooperation with PAJUNK®, which is characterized by its versatility. The stimulating catheter is equipped with an

integrated metal spiral and a steel stylet. With that, the anesthetist can control the stiffness of the catheter tip at any time, and the user can simultaneously stimulate and perform injections.

Unhindered flow of the anesthetic

- The catheter is absolutely kink free, thanks to the metal spiral, and guarantees an optimal flow of the anesthetic
- Perfect localization, thanks to radiographic contrast properties and 100 % echogenicity (ultrasonic visibility)

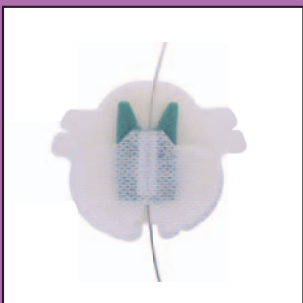
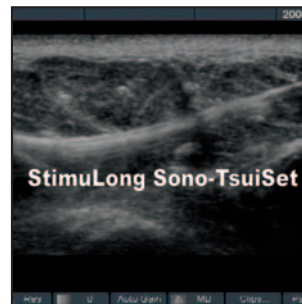
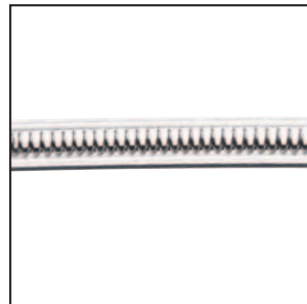
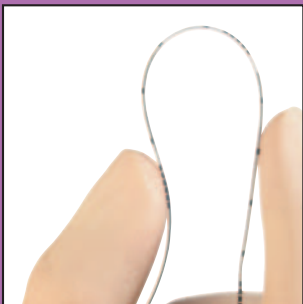
- The integrated metal spiral helps in avoiding the annoying memory-effect, caused by rolling the catheter up in the packing

Well-protected with FixoCath

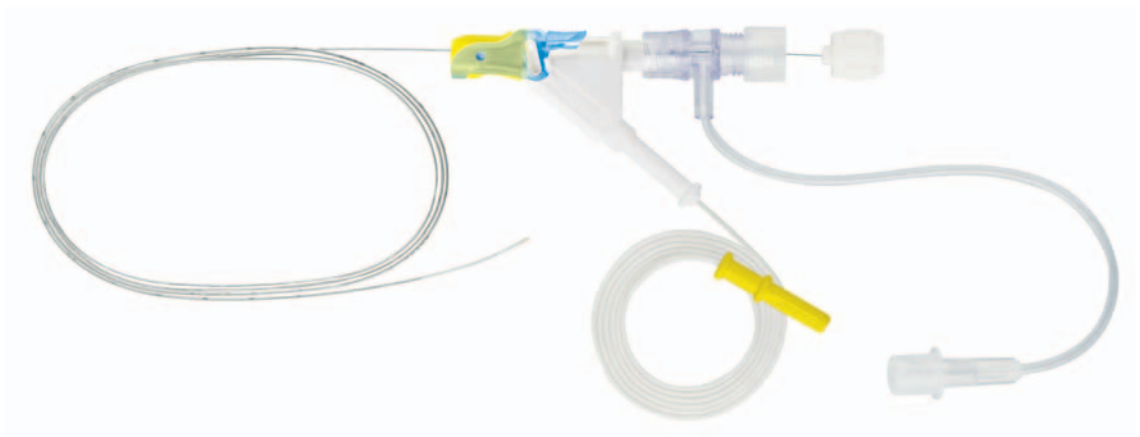
FixoCath guarantees a kink-free and secured fixation of the catheter.

- The Catheter is placed into the hollow of the FixoCath directly after leaving the body

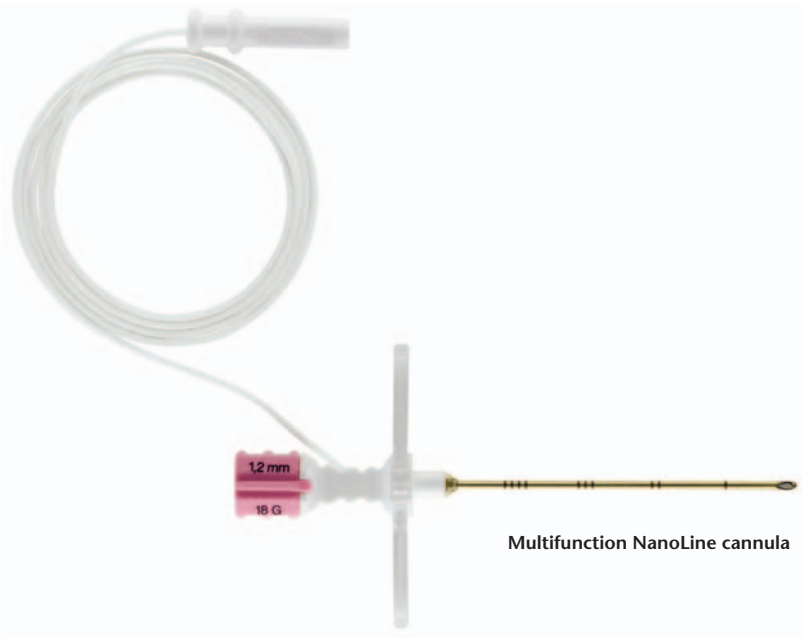
- Fixation with a hypoallergenic adhesive bandage
- Forcing off or bending the catheter is practically impossible
- Guarantees the patient a maximum of mobility



FixoCath



Stimulating catheter with metal spiral and steel stylet



Multifunction NanoLine cannula

Simultaneous injecting and stimulating

The StimuLong Sono-Tsui Set Catheter is stimu-
table. This provides for the exact determinability
of its position in the peripheral or epidural space.

- Electric stimulation by connection to a nerve stimulator (connector cable 60 cm long.)
- Highly precise insulation of the cannula, thanks to NanoLine coating
- Tsui-Test with the aid of the stimu-
table catheter tip
- Perfect ultrasonic visibility by means of the
integrated metal spiral

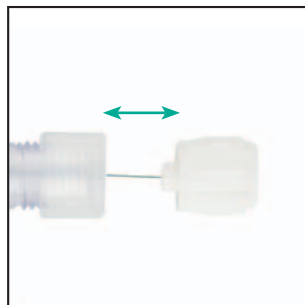
Controllable stiffness of the catheter tip

The steel stylet can be advanced or retracted, and
it permits the perfect manipulation of the catheter
tip.

- The stiff catheter tip will make the introduction
and advancement of the catheter to the desired
location easier
- The soft catheter tip will help avoid tissue
injuries, it permits atraumatic movements in the
epidural space and ensures for perfect control



Fully inserted stylet and therefore
stiff catheter tip



Retracted stylet: soft catheter tip

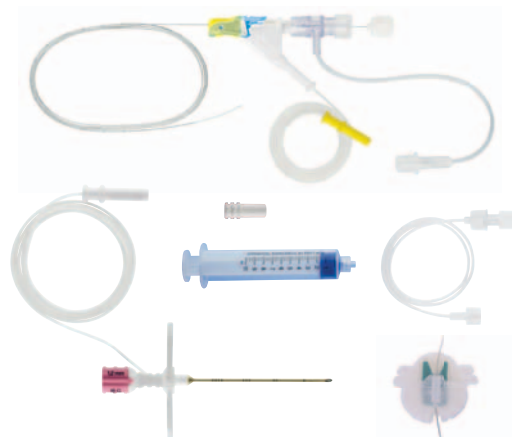


All the information at a glance:

StimuLong Sono-Tsui Set

Set consisting of:

- Tuohy NanoLine cannula (multifunction cannula) with handle plate, metal stylet and electrical connector cable
- StimuLong catheter with steel stylet
- Catheter-introductory aid
- StimuLong clamping adapter with electrical connector cable 60 cm
- Injecting tube with hemostatic valve
- Injecting tube
- LOR syringe 10 ml
- Locking cap
- Non-conductive plug
- FixoCath



Product	Size	Catheter	Item no.	PU
StimuLong Sono-Tsui Set	18 G x 50 mm	20 G x 90 cm	531156-35C	10
	18 G x 100 mm	20 G x 90 cm	521156-35C	10

Literature:

Peripheral stimulating catheter placement

Tsui BCH, Finucane B. Practical recommendations for improving needle-tip visibility under ultrasound guidance? *Reg Anesth Pain Med.* 2005 Nov-Dec;30(6):596-7

Tsui BCH, Kropelin B. Electrophysiological effect of dextrose 5% in water on single-shot peripheral nerve stimulation. *Anesthesia and Analgesia* 2005;100(6):1837-9.

Tsui BCH, Kropelin B, Ganapathy S, Finucane B. Dextrose 5% in water: fluid medium for maintaining electrical stimulation of peripheral nerves during stimulating catheter placement. *Acta Anaesthesiologica Scandinavica* 2005;49:1562-1565.

Pham Dang C. Stimulating catheter and electrophysiologic effect of the flush injectates: exciting. *Reg Anesth Pain Med.* 2004 Sep-Oct;29(5):509-10

Pahm-Dang C, Kick O, Collet T et al. Continuous peripheral nerve blocks with stimulating catheters. *Reg Anesth Pain Med* 2003; 28: 83-8.

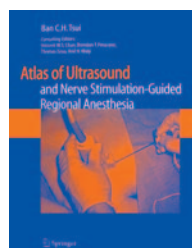
Epidural needle placement using Insulated needle:

Tsui BCH, Wagner A, Cunningham K, Perry S, Desai S, Seal R.

Can continuous low current electrical stimulation distinguish insulated needle position in the epidural and intrathecal spaces in pediatric patients? *Pediatric Anesthesia* 2005;15:959-963.

Tsui BCH, Wagner A, Cunningham K, Perry S, Desai S, Seal R. Threshold current of electrical stimulation in the intrathecal space using insulated needles in pediatric patients. *Anesthesia and Analgesia* 2005;100(3): 662-5.

Tsui BCH, Wagner A, Cave D, Seal R. Threshold current for an insulated needle in placing epidural analgesia in pediatric patients. *Anesthesia and Analgesia* 2004;99



Tsui Ban C.H.
Atlas of Ultrasound- and Nerve Stimulation-Guided Regional Anesthesia

EU patent: 07006051.2
US patent: 11/742,480

PAJUNK GmbH
Medizintechnologie
Karl-Hall-Strasse 1
D-78187 Geisingen/Germany
Phone +49 (0) 77 04/92 91-0
Fax +49 (0) 77 04/92 91-6 00
www.pajunk.com